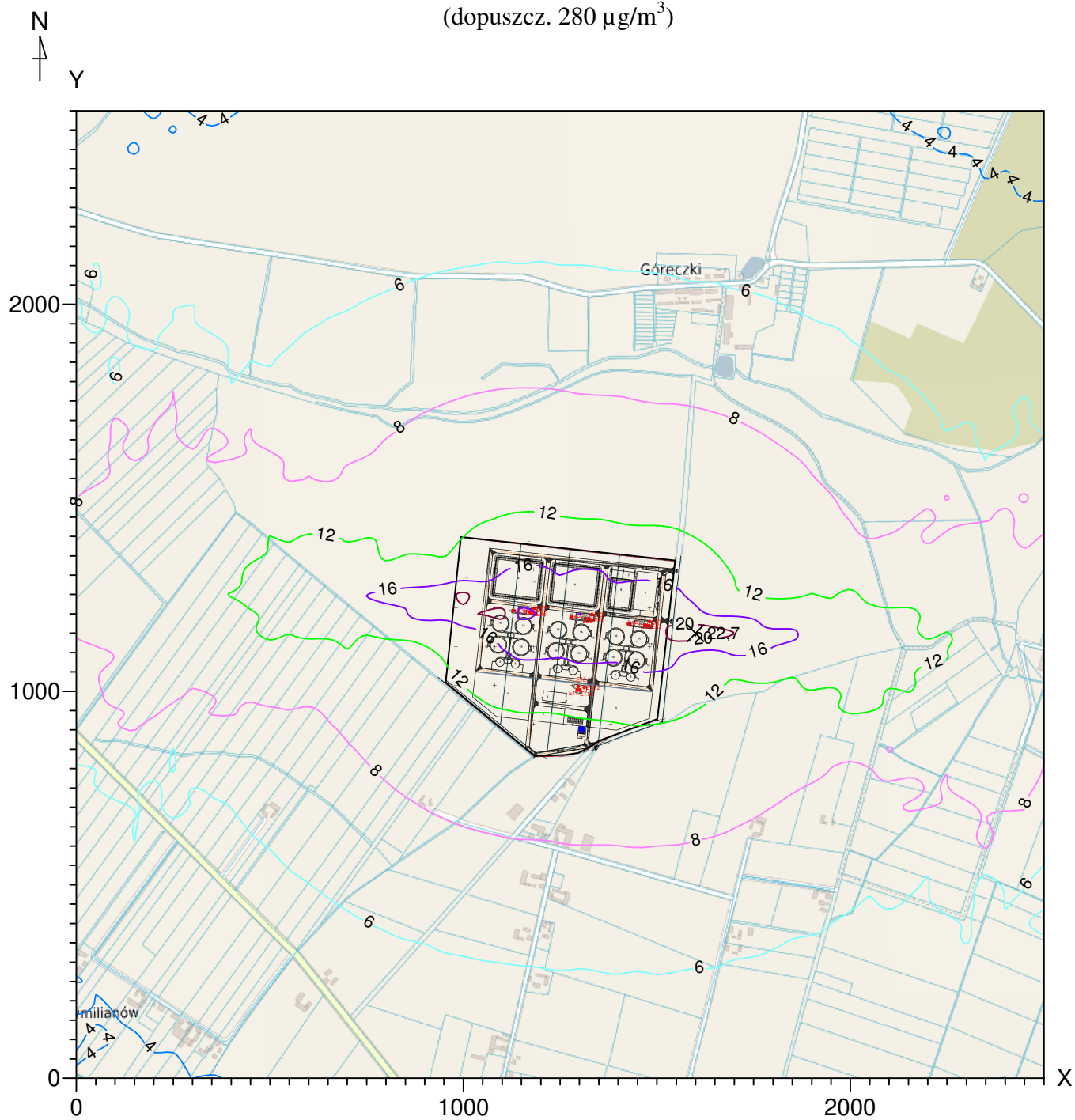
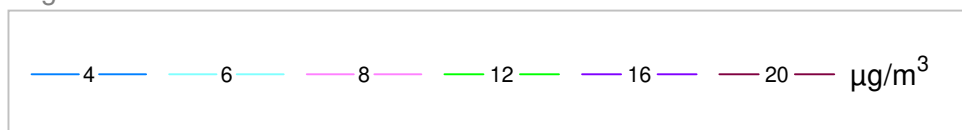


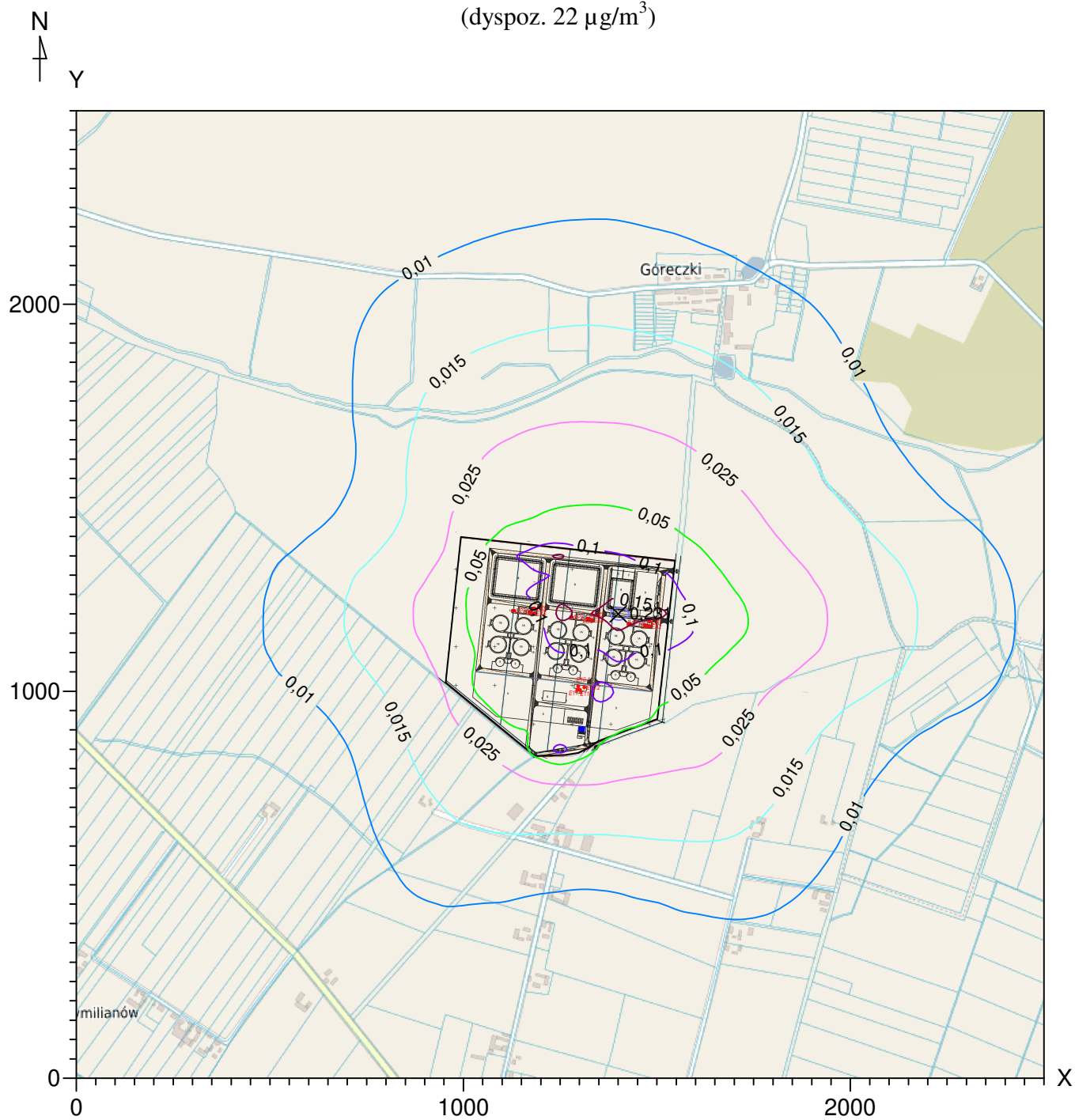
Izolinie stężeń maksymalnych pyłu PM-10  $\mu\text{g}/\text{m}^3$   
(dopuszcz. 280  $\mu\text{g}/\text{m}^3$ )



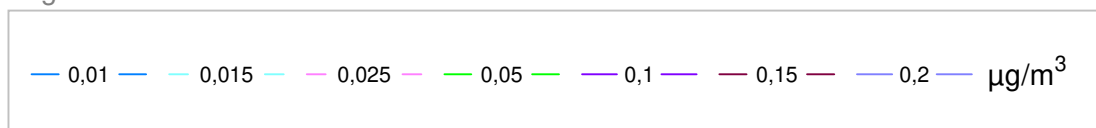
Legenda



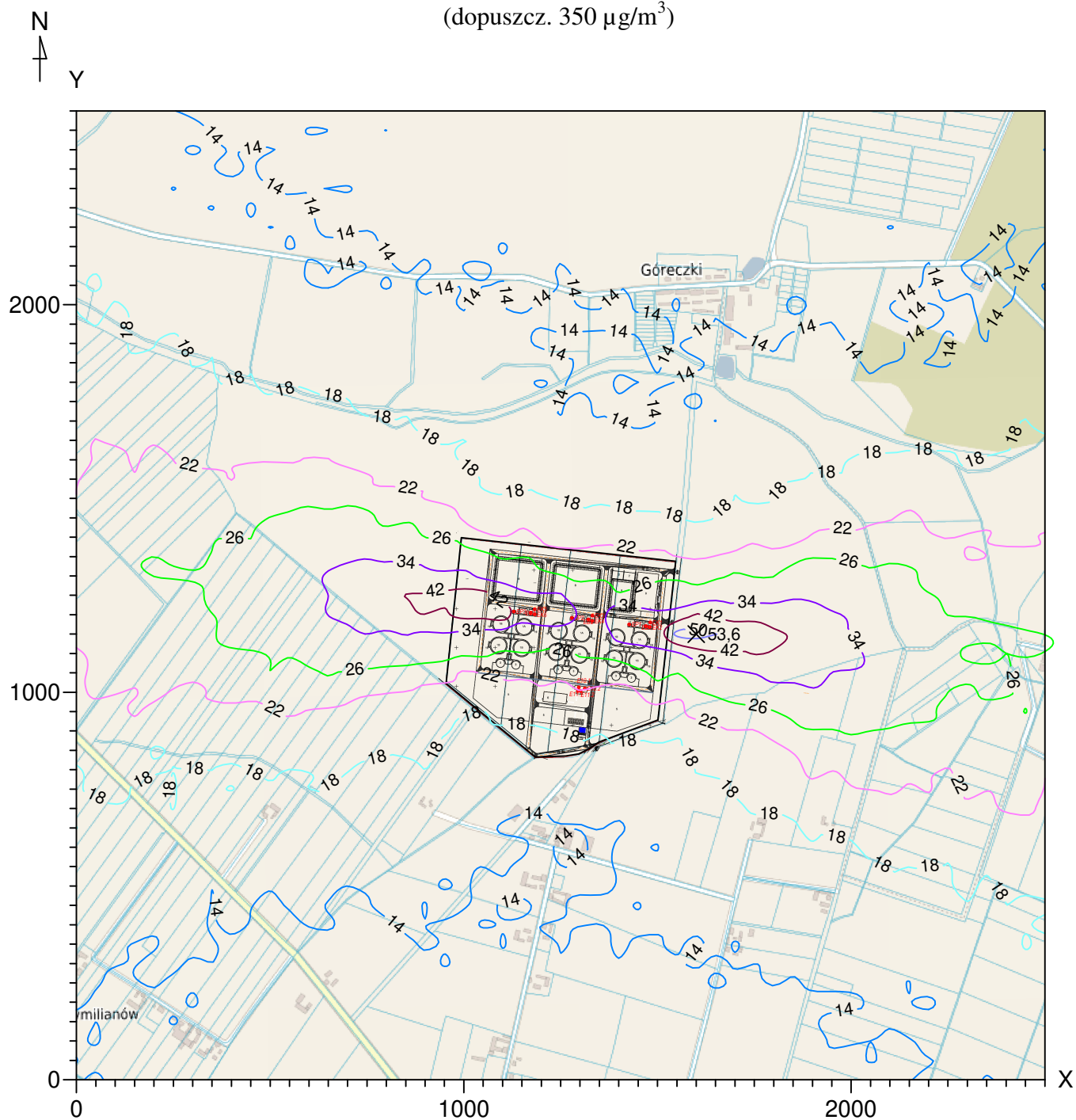
Izolinie stężeń średnich pyłu PM-10  $\mu\text{g}/\text{m}^3$   
(dyspoz. 22  $\mu\text{g}/\text{m}^3$ )



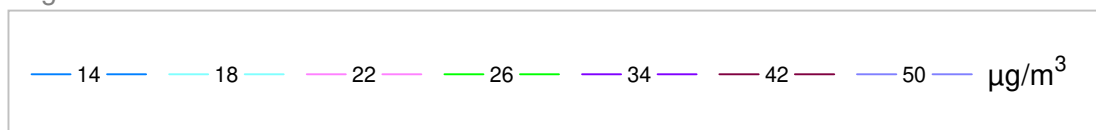
Legenda



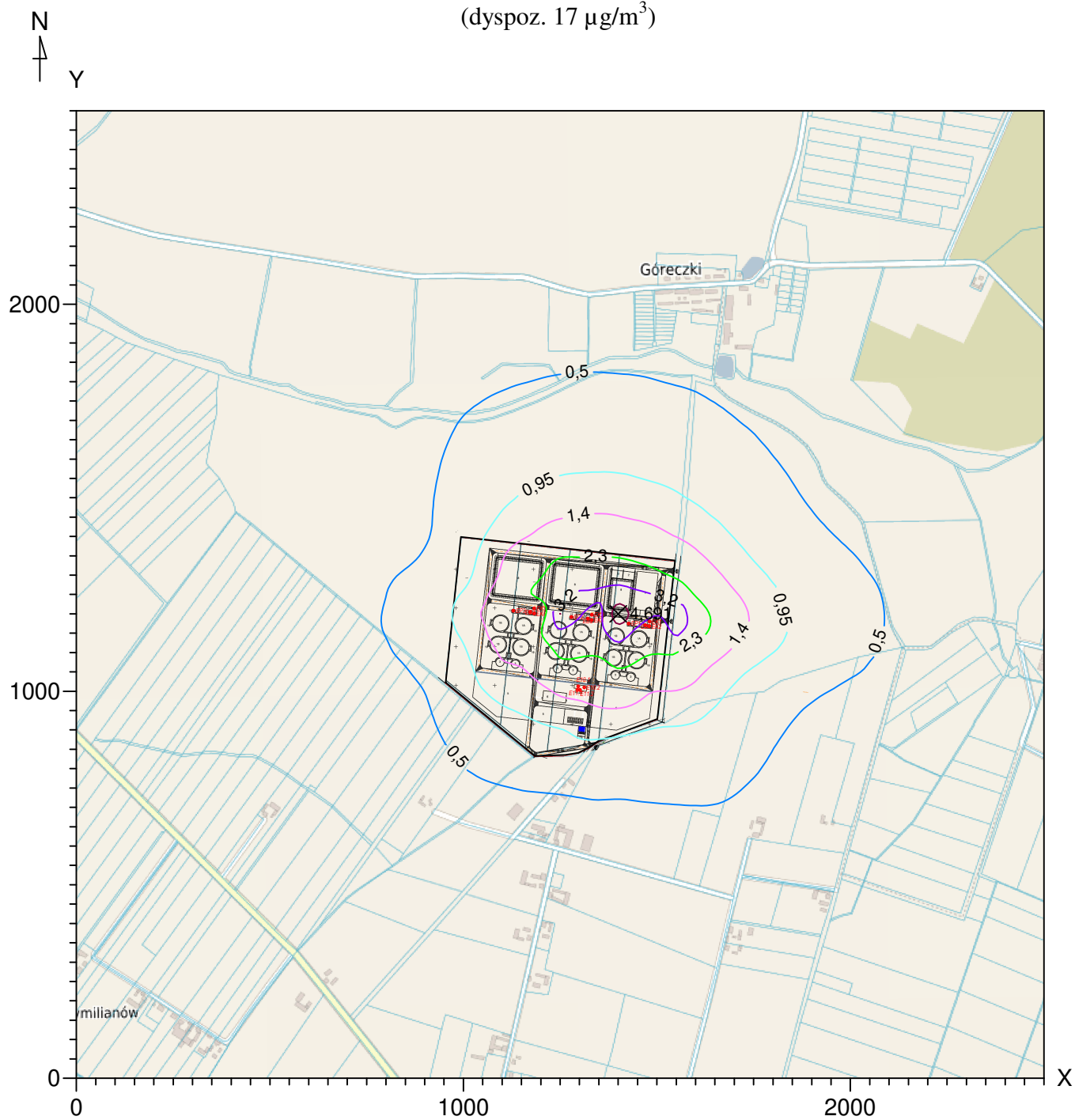
Izolinie stężeń maksymalnych dwutlenku siarki  $\mu\text{g}/\text{m}^3$   
(dopuszcz.  $350 \mu\text{g}/\text{m}^3$ )



Legenda



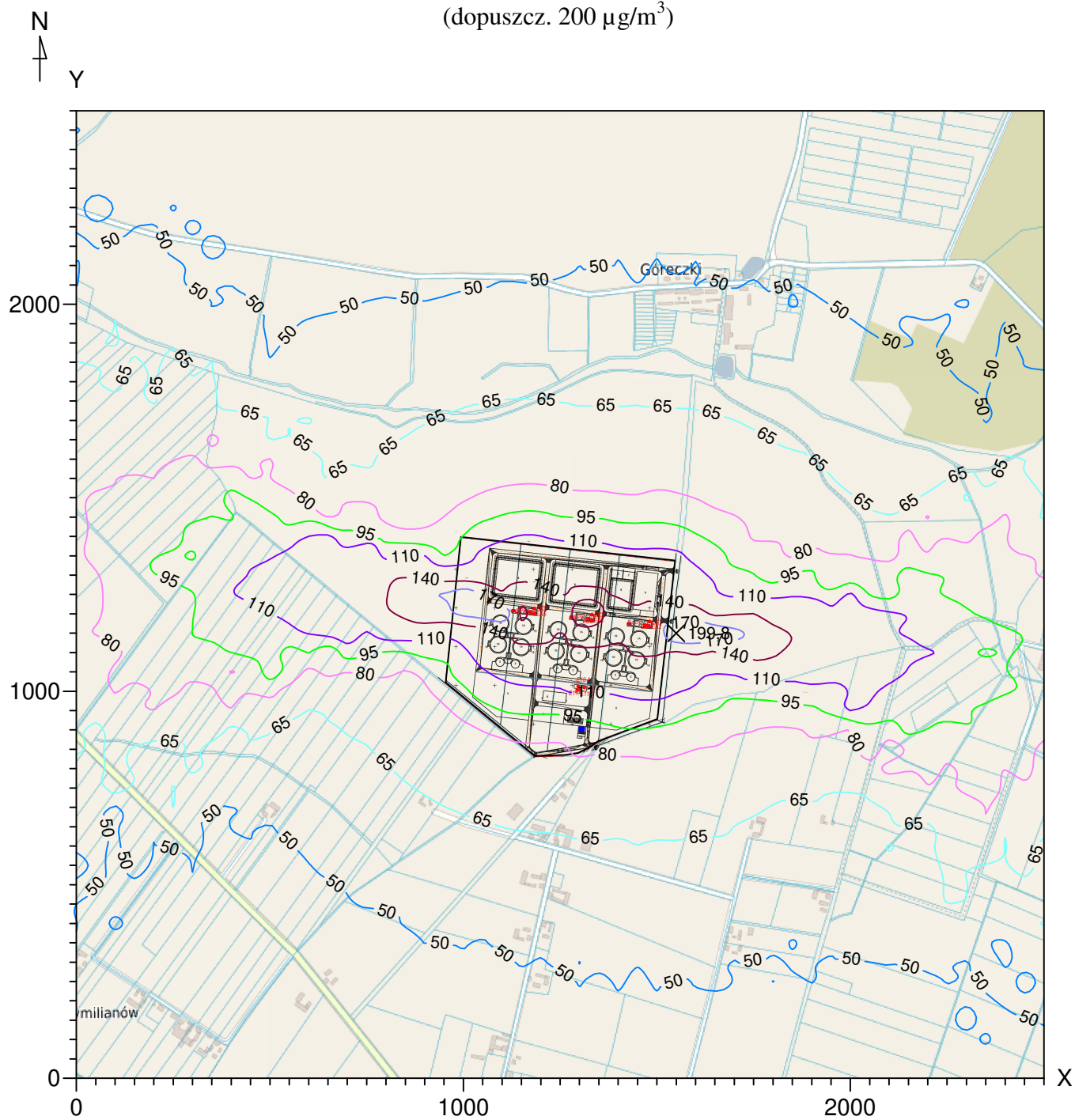
Izolinie stężeń średnich dwutlenku siarki  $\mu\text{g}/\text{m}^3$   
(dyspoz.  $17 \mu\text{g}/\text{m}^3$ )



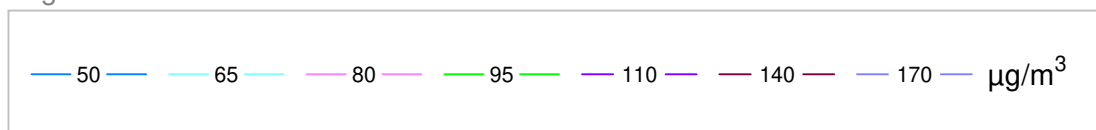
Legenda



Izolinie stężeń maksymalnych tlenków azotu  $\mu\text{g}/\text{m}^3$   
(dopuszcz.  $200 \mu\text{g}/\text{m}^3$ )

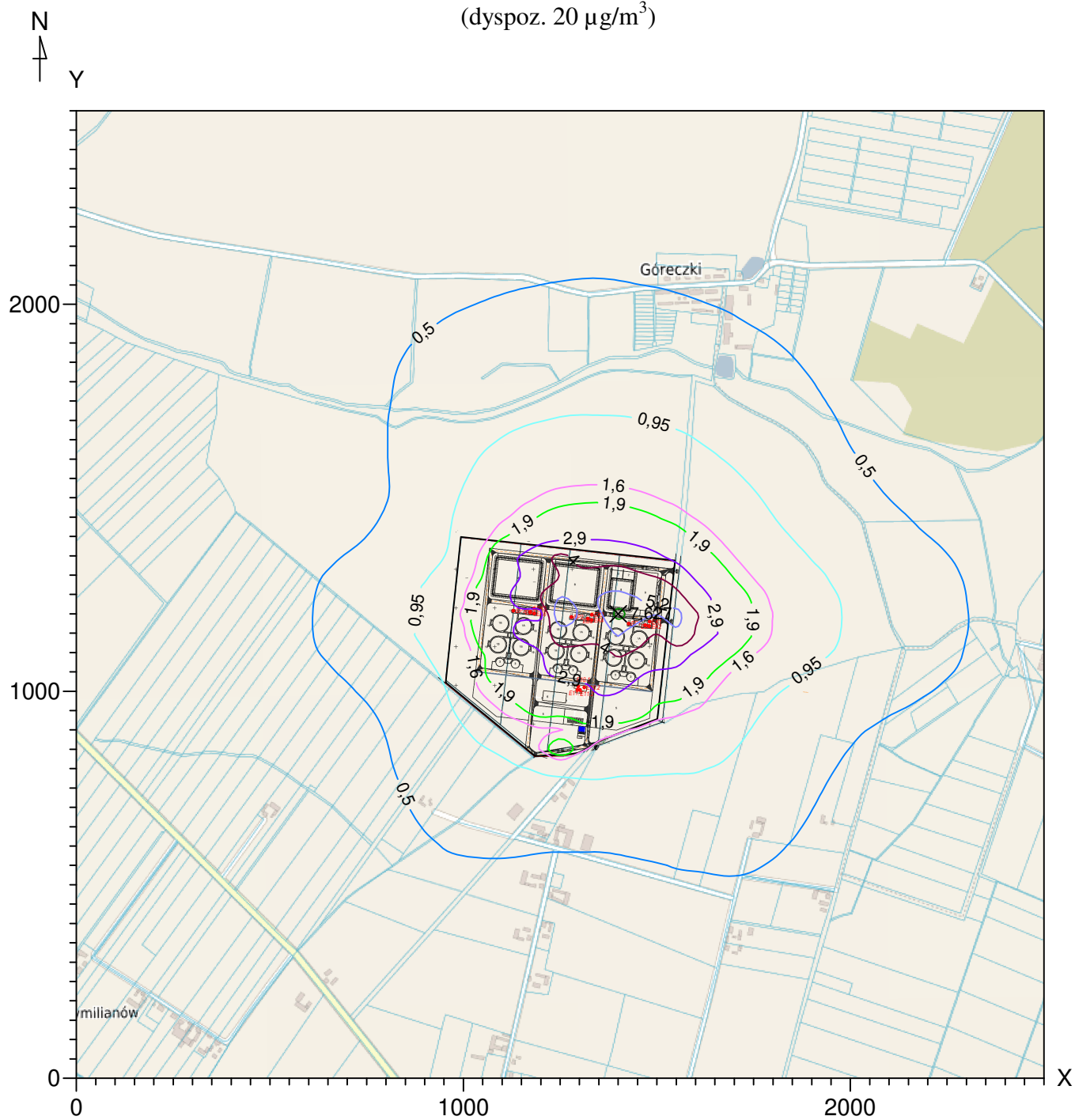


Legenda





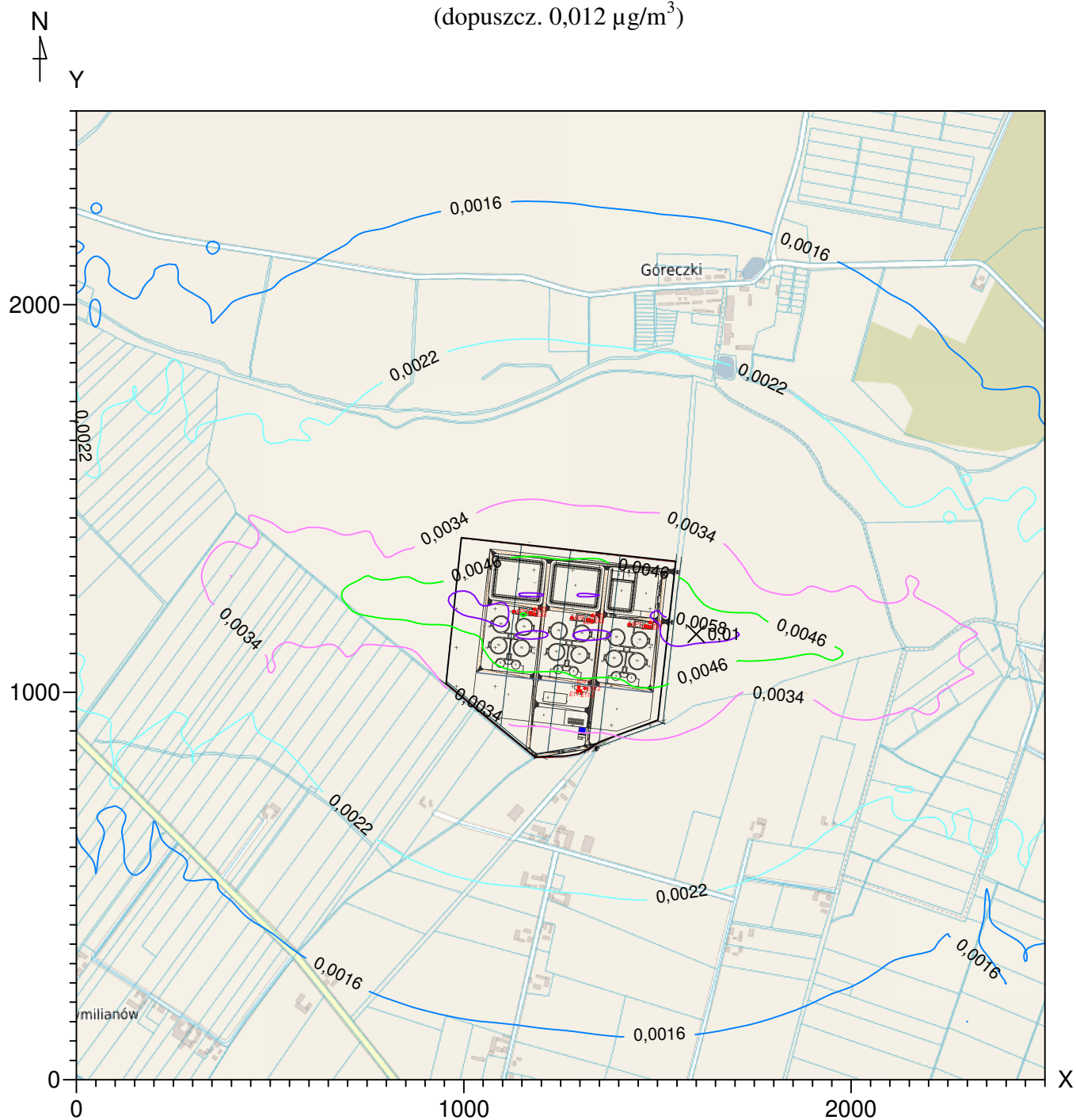
Izolinie stężeń średnich tlenków azotu  $\mu\text{g}/\text{m}^3$   
(dyspoz. 20  $\mu\text{g}/\text{m}^3$ )



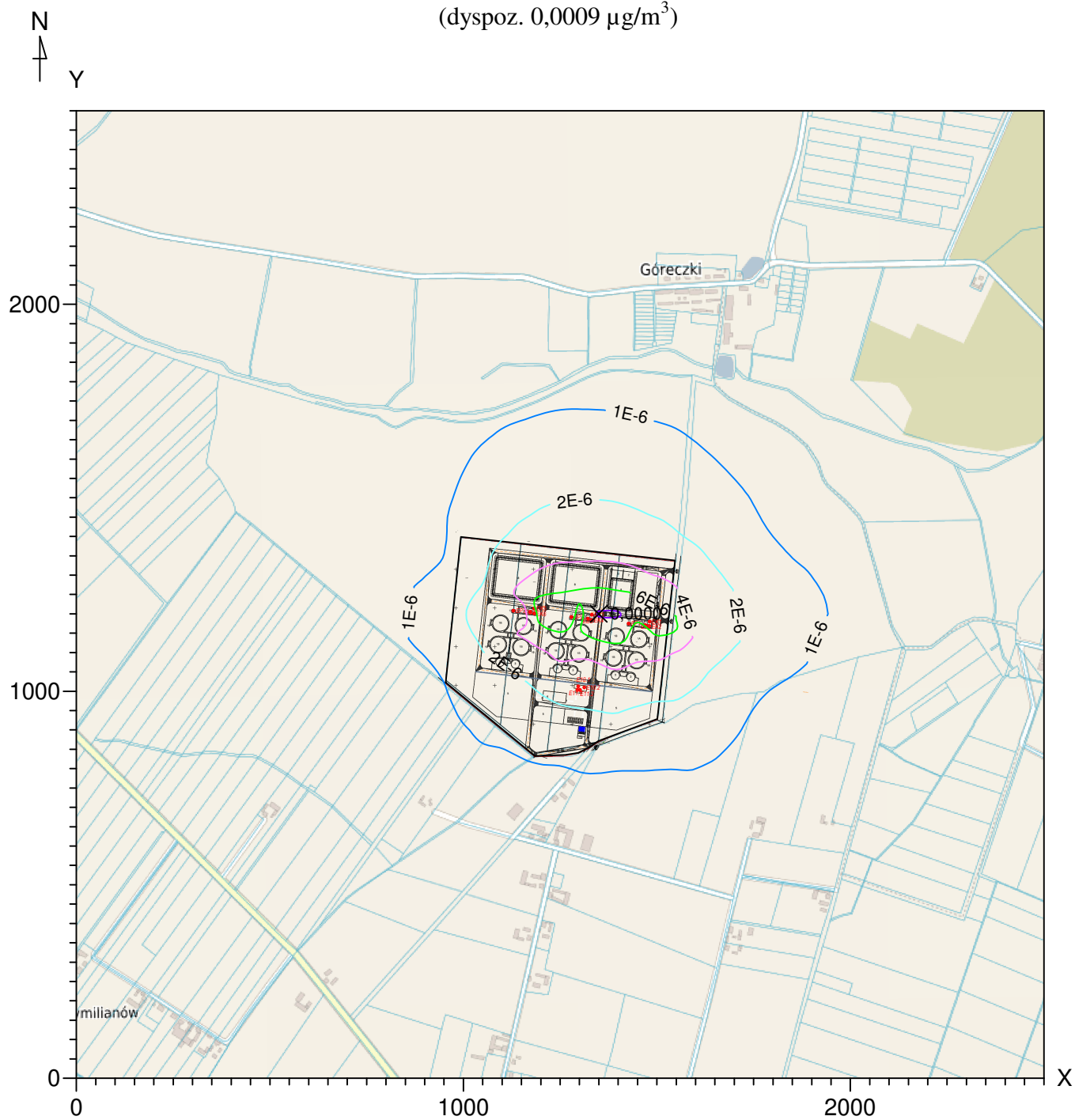
Legenda

0,5 0,95 1,6 1,9 2,9 4 5,2 7  $\mu\text{g}/\text{m}^3$

Izolinie stężeń maksymalnych benzo/a/pirenu  $\mu\text{g}/\text{m}^3$   
(dopuszcz.  $0,012 \mu\text{g}/\text{m}^3$ )



Izolinie stężeń średnich benzo/a/pirenu  $\mu\text{g}/\text{m}^3$   
(dyspoz. 0,0009  $\mu\text{g}/\text{m}^3$ )

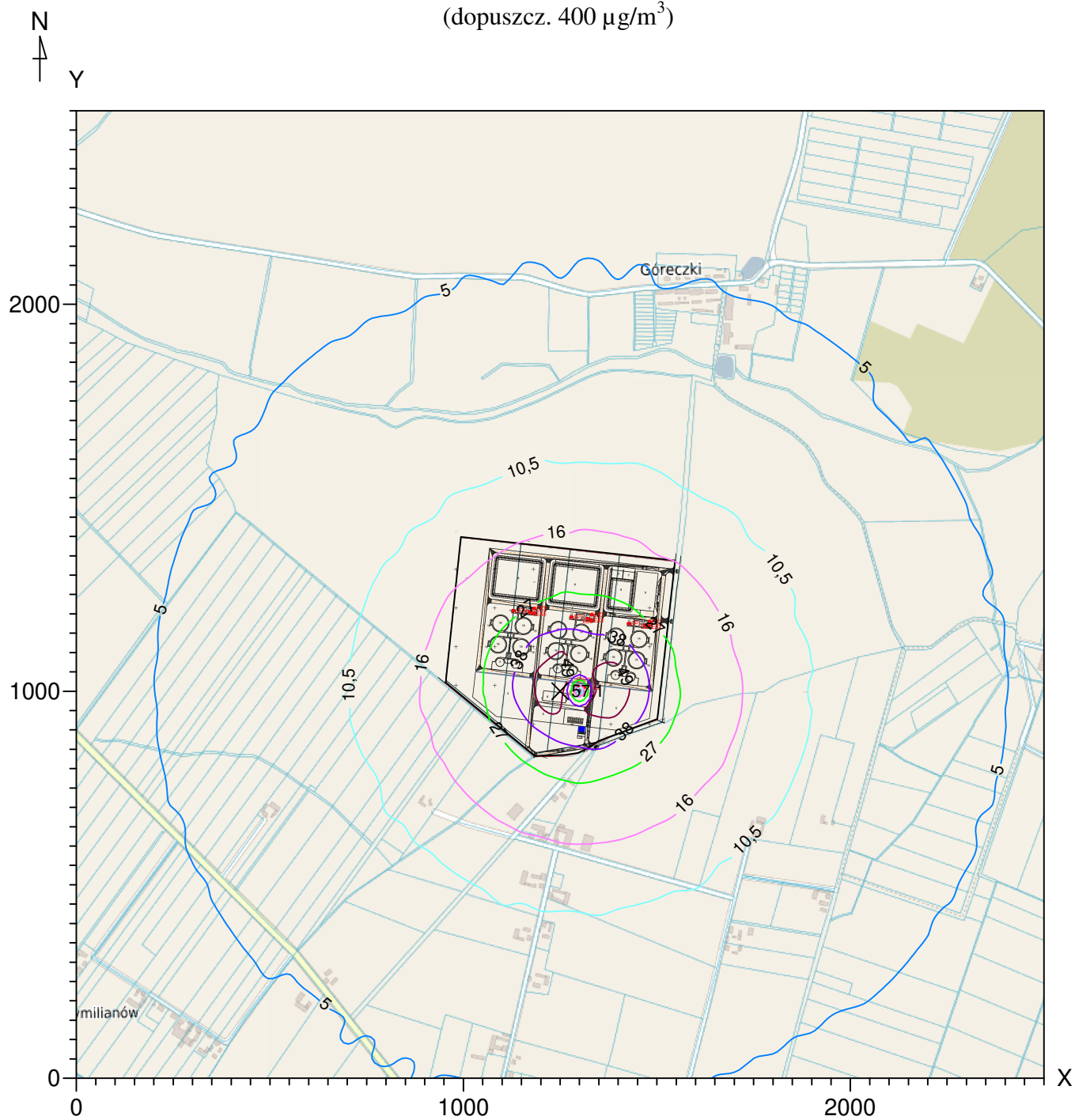


Legenda

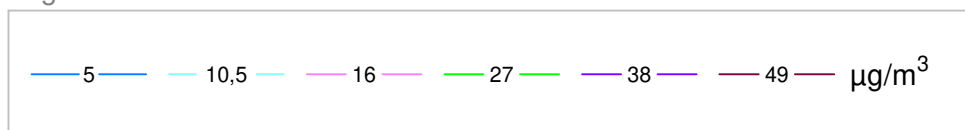
- 0,000001 - 0,000002 - 0,000004 - 0,000006 - 0,000008 -  $\mu\text{g}/\text{m}^3$



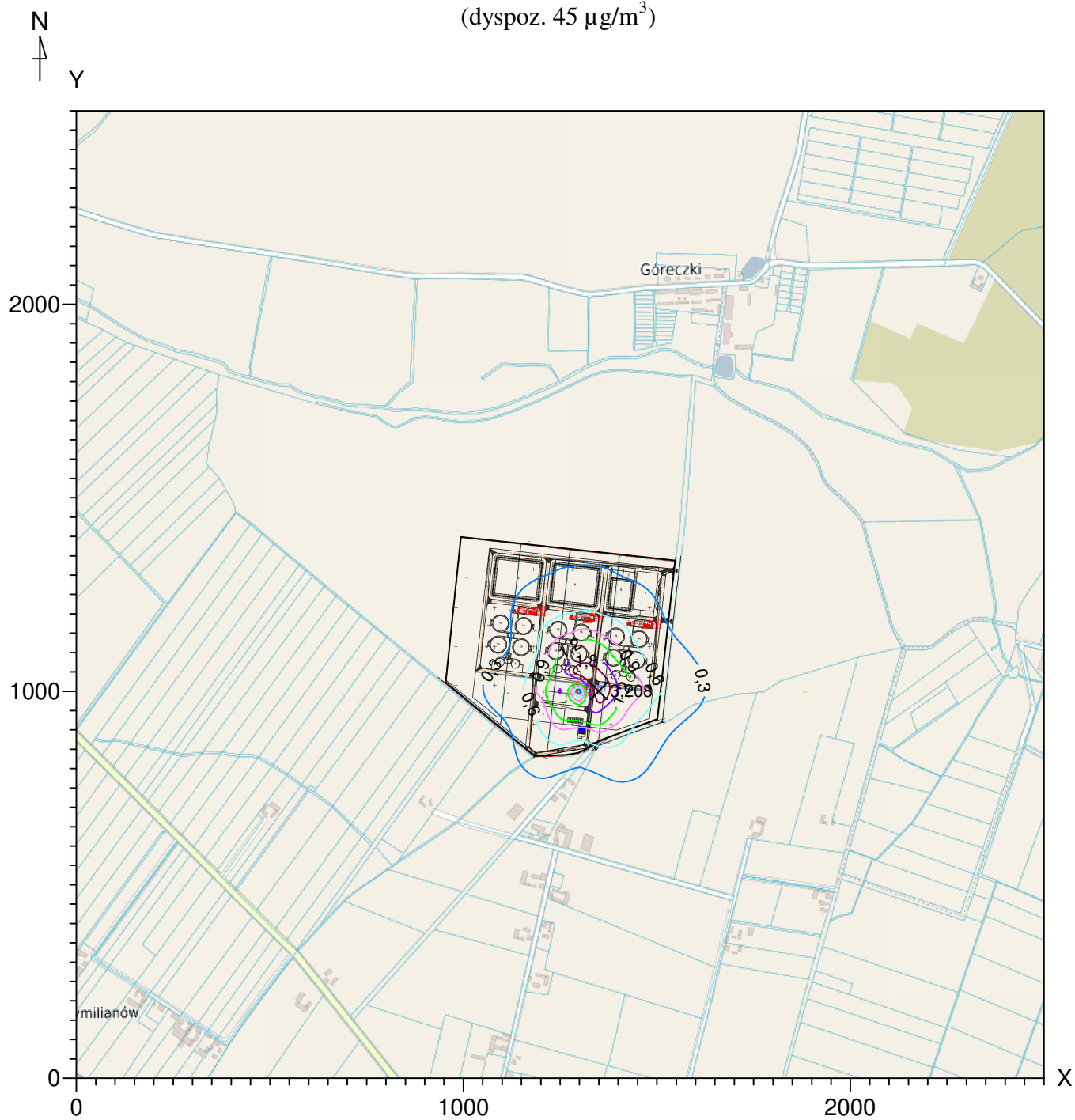
Izolinie stężeń maksymalnych amoniaku  $\mu\text{g}/\text{m}^3$   
(dopuszcz.  $400 \mu\text{g}/\text{m}^3$ )



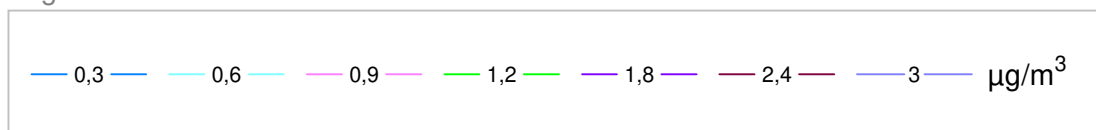
Legenda



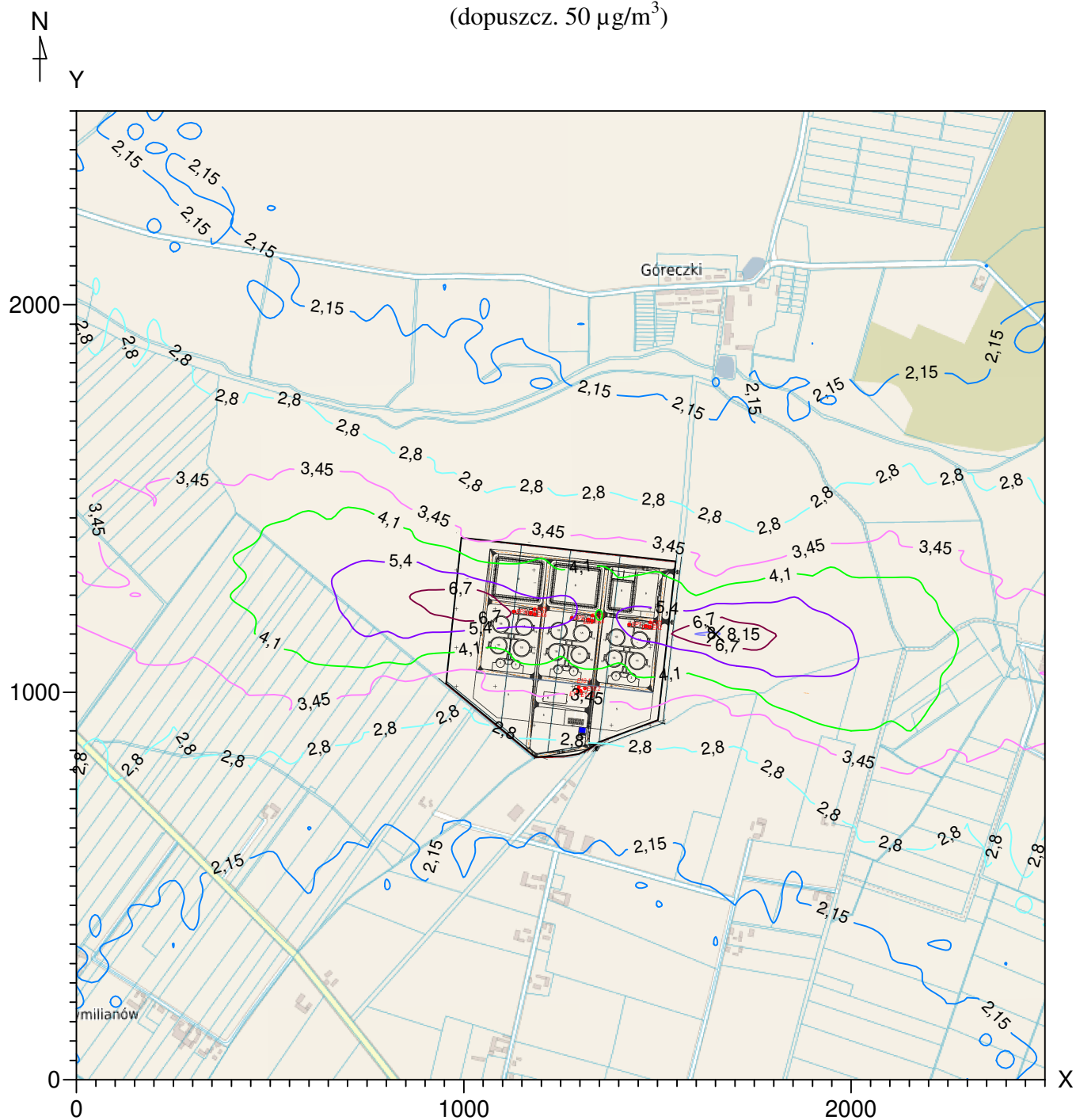
Izolinie stężeń średnich amoniaku  $\mu\text{g}/\text{m}^3$   
(dyspoz.  $45 \mu\text{g}/\text{m}^3$ )



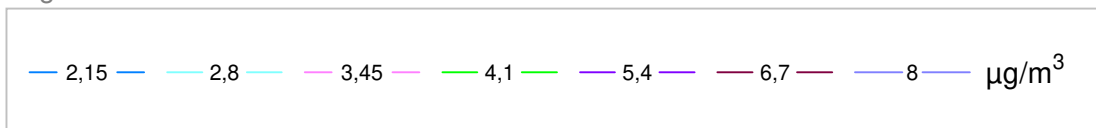
Legenda



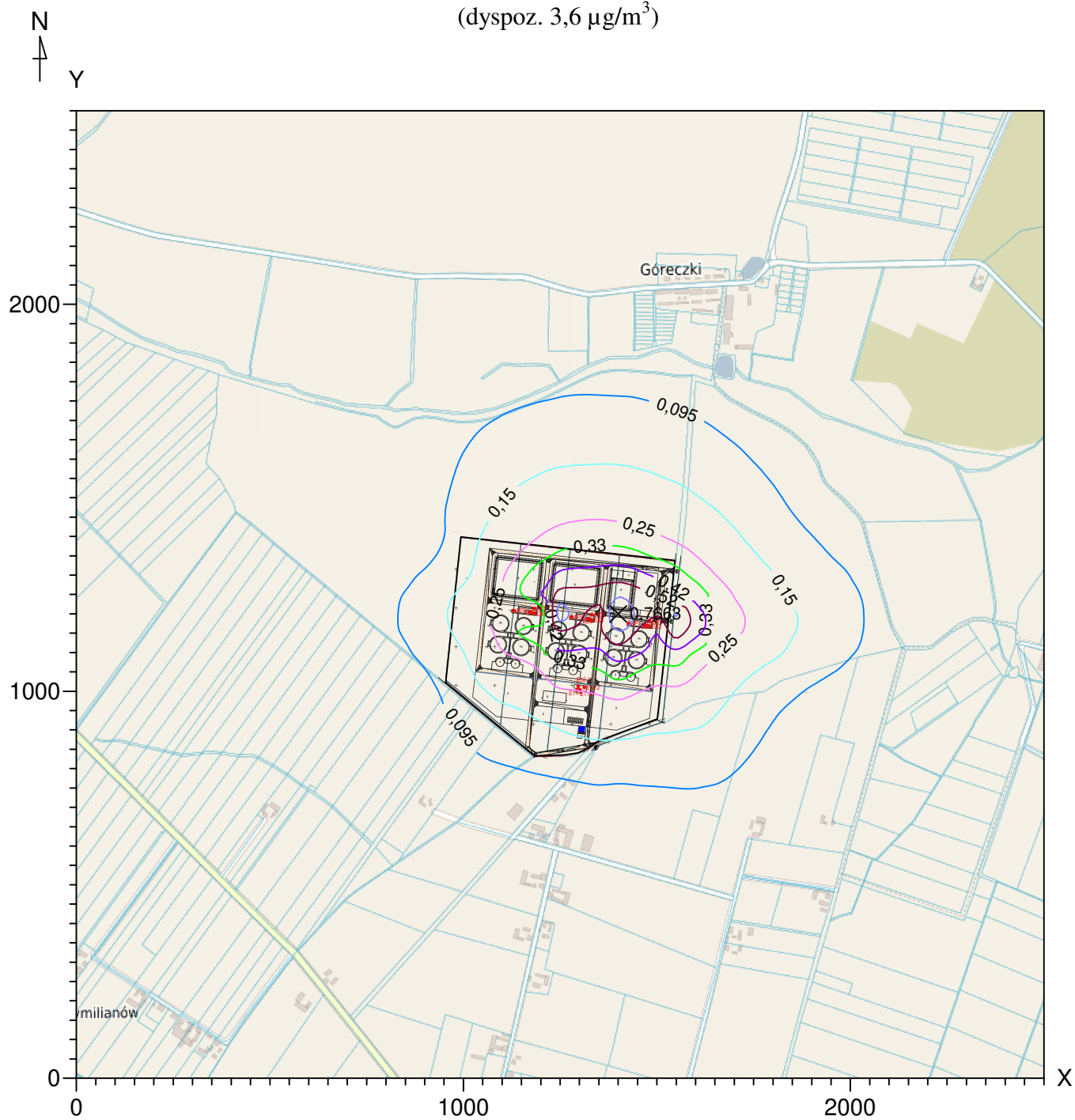
Izolinie stężeń maksymalnych formaldehydu  $\mu\text{g}/\text{m}^3$   
(dopuszcz.  $50 \mu\text{g}/\text{m}^3$ )



Legenda



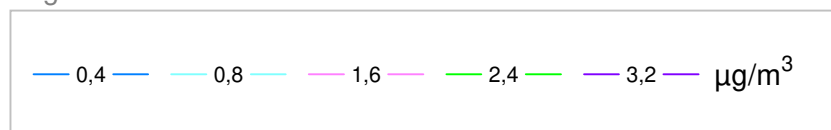
Izolinie stężeń średnich formaldehydu  $\mu\text{g}/\text{m}^3$   
(dyspoz.  $3,6 \mu\text{g}/\text{m}^3$ )



Legenda

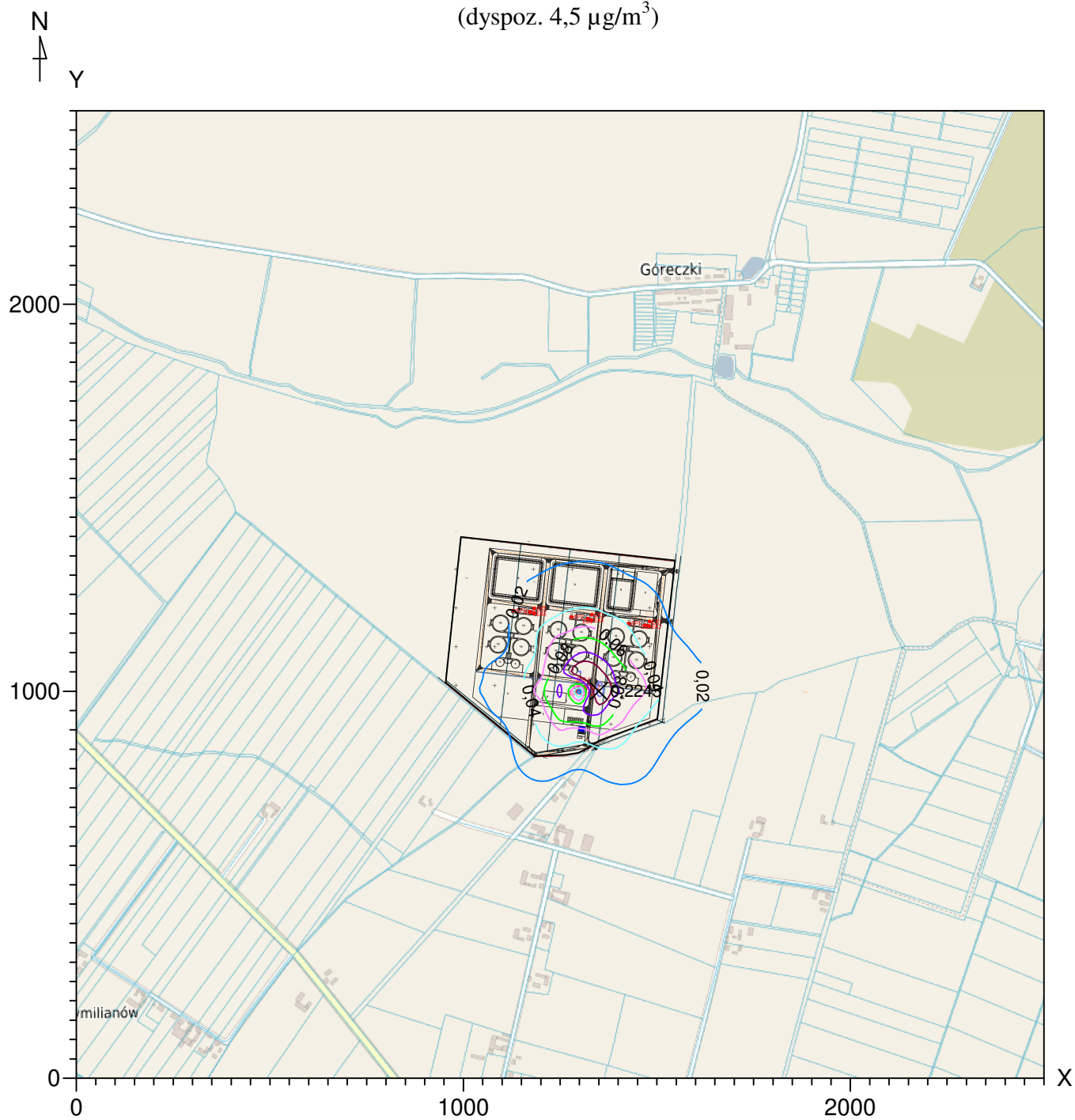
— 0,095 — 0,15 — 0,25 — 0,33 — 0,42 — 0,52 — 0,62 —  $\mu\text{g}/\text{m}^3$

N  
+  
Y

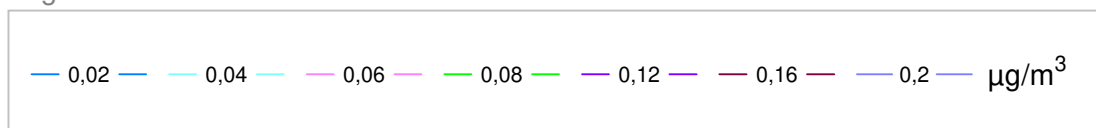


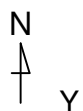


Izolinie stężeń średnich siarkowodoru  $\mu\text{g}/\text{m}^3$   
(dyspoz.  $4,5 \mu\text{g}/\text{m}^3$ )

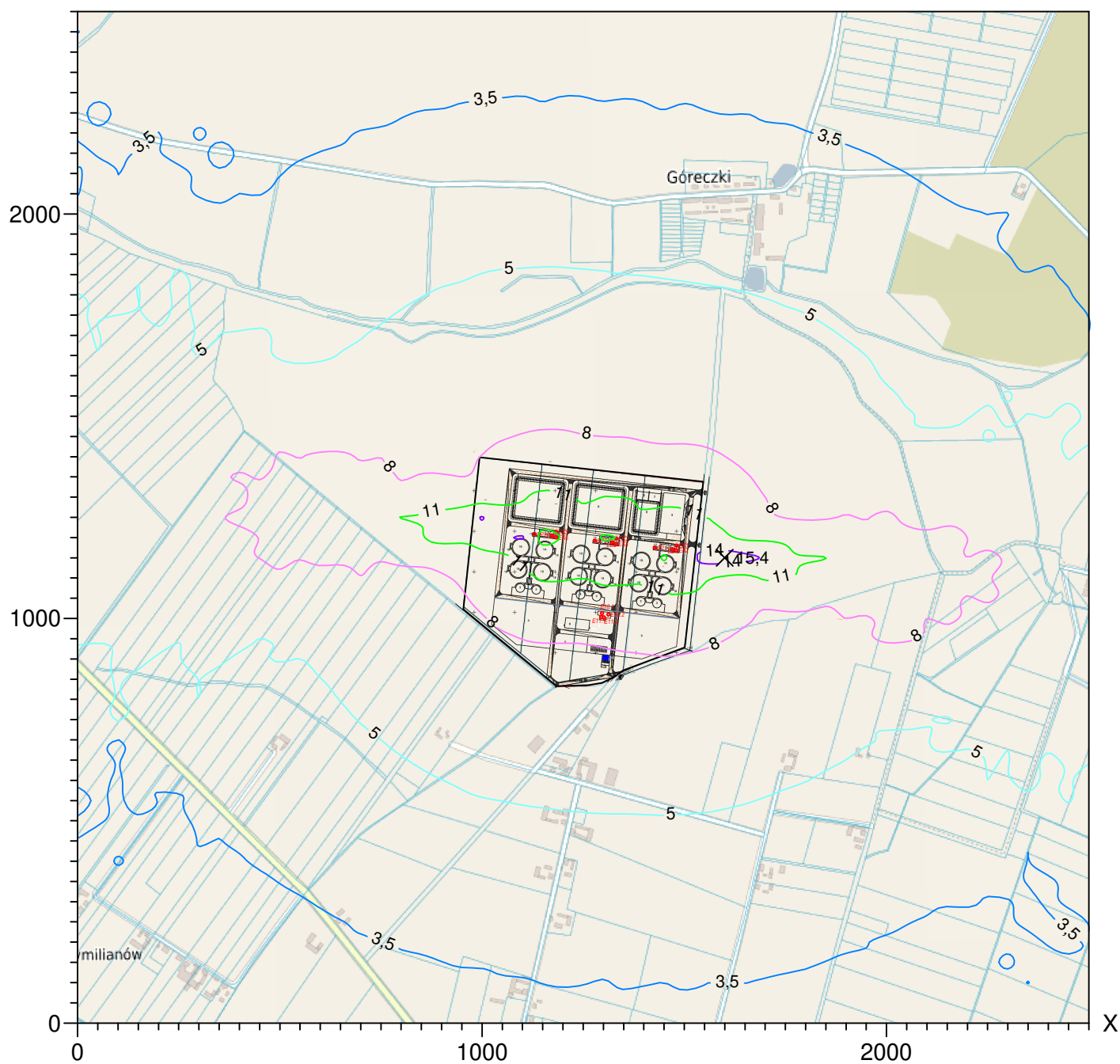


Legenda

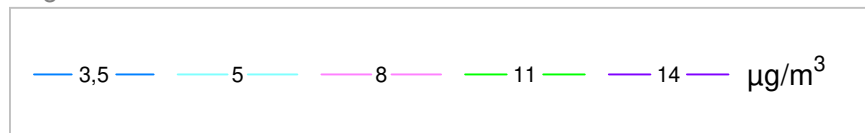




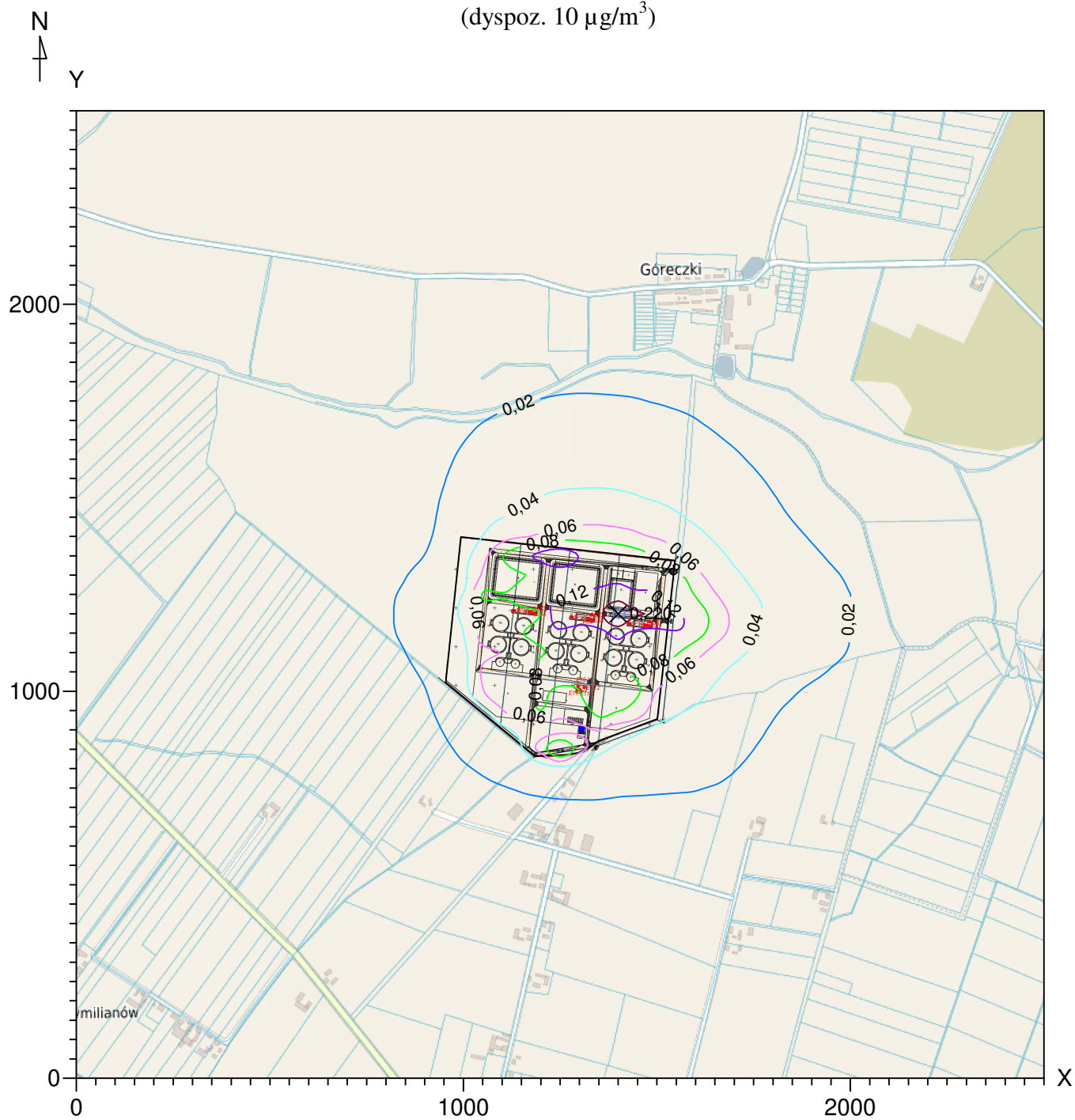
# Izolinie stężeń maksymalnych pyłu zawieszonego PM 2,5 $\mu\text{g}/\text{m}^3$



## Legenda



Izolinie stężeń średnich pyłu zawieszonego PM 2,5  $\mu\text{g}/\text{m}^3$   
(dyspoz. 10  $\mu\text{g}/\text{m}^3$ )



Legenda

